

South Long Park Pavilion project description:

16' wide x 24' long x 9' high (at eave) post frame open pavilion with vaulted hipped roof. Roof framing assumed to be engineered scissor trusses with 6:12 top pitch, 3:12 bottom pitch and 12" eave and gable overhangs on 4 sides (vented soffit in eaves only). The frame shall be clad in painted steel siding and roofing with a minimum 40-year warranty, Village Parks Committee to select colors. All headers shall be wrapped in color matched aluminum. Ceiling shall be color matched aluminum soffit panels. The pavilion shall include a minimum 5" cast-in-place concrete slab on grade.

A sketch of the proposed pavilion and a site plan prepared by Village staff are included for reference.

Successful bidder will work with the Village DPW to coordinate installation of the Pavilion in concert with the Village's Sports Court project which will be run concurrently. It is possible that some or all of the site preparation may be facilitated through the assistance of DPW staff, however for the purposes of this bid solicitation, the Village requests that site clearing, earthwork immediately surrounding the pavilion, and all borrow materials (subbase stone, etc) be included as line item values separate from the base scope described above.

Successful bidder shall also include all engineering (including dimensioned construction documents stamped by a NYSPE) to include treated posts, trusses, purlins, foundations, etc. with sufficient clarity to indicate the location, nature, and extent of the work proposed and show in detail that it will conform to the provisions of the Building Code of New York State and all relevant laws, ordinances, rules and regulations as determined by the Village Building Official.

The project shall be completed prior to November 1<sup>st</sup>.

Our workers shall be fully licensed and insured and shall be remunerated based on prevailing wage rates in accordance with Village municipal purchasing standards. Permits are the responsibility of the Village. Should the successful bidder encounter unforeseen underground obstacles, the removal of such obstacles shall be by Village DPW at no expense to the contractor. The Village will make suitable truck access to the building site.

treddo

PROJECT MAKE

PROPOSED FOR

VILLAGE OF WILLIAMSVILLE  
5655 MAIN STREET  
BUFFALO, NY 14221

SOUTH LONG PARK BASKETBALL & TENNIS COURT RENOVATIONS

PROJECT MAKE

40 SOUTH LONG ST  
WILLIAMSVILLE, NY

DRAWING MAKE

SITE DEMOLITION LAYOUT PLAN

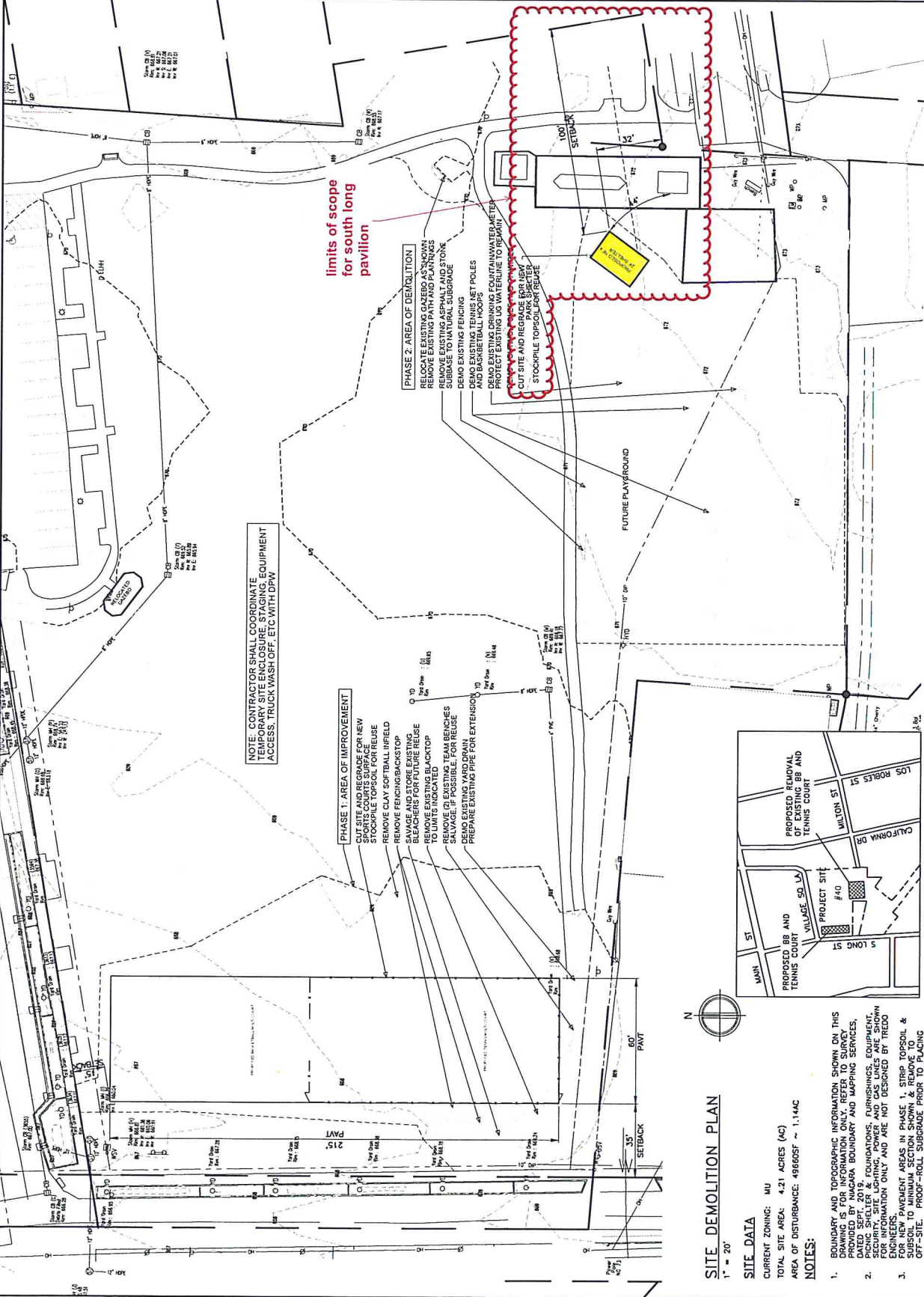
DATE: 03.27.23  
JOB NO: N/A  
CHECKED BY: MCE  
DRAWN BY: MPE

PROVISIONS

DATE: 03.27.23  
JOB NO: N/A  
CHECKED BY: MCE  
DRAWN BY: MPE

DRAWING NO. SP101

DOCUMENT STATUS:  PROGRESS NOT FOR CONSTRUCTION  PROGRESS  BD SET  PERMIT SET  FINAL FOR CONSTRUCTION



**SITE DEMOLITION PLAN**

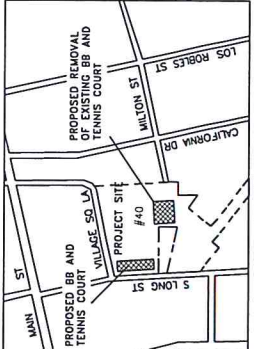
1" = 20'

**SITE DATA**

CURRENT ZONING: MU  
TOTAL SITE AREA: 4.21 ACRES (AC)  
AREA OF DISTURBANCE: 49665SF ~ 1.14AC

**NOTES:**

1. BOUNDARY AND TOPOGRAPHIC INFORMATION SHOWN ON THIS DRAWING IS FOR INFORMATION ONLY. THE BOUNDARY AND TOPOGRAPHIC INFORMATION IS PROVIDED BY NIAGARA BOUNDARY AND MAPPING SERVICES, DATED SEPT. 2019. FOUNDATIONS, FURNISHINGS, EQUIPMENT, SECURITY, SITE LIGHTING, POWER AND GAS LINES ARE SHOWN FOR INFORMATION ONLY AND ARE NOT DESIGNED BY TREDDO. FOR NEW PAVEMENT AREAS IN PHASE 1, STRIP TOPSOIL & SUBSOIL TO MINIMUM SECTION SHOWN & REMOVE TO OFF-SITE. PROOF-ROLL SUBGRADE PRIOR TO PLACING GEO-FABRIC & COMPACTED BACKFILL.



**SITE LOCATION MAP**

PREPARED FOR  
 VILLAGE OF  
 WILLIAMSVILLE  
 5565 MAIN STREET  
 BUFFALO, NY 14221

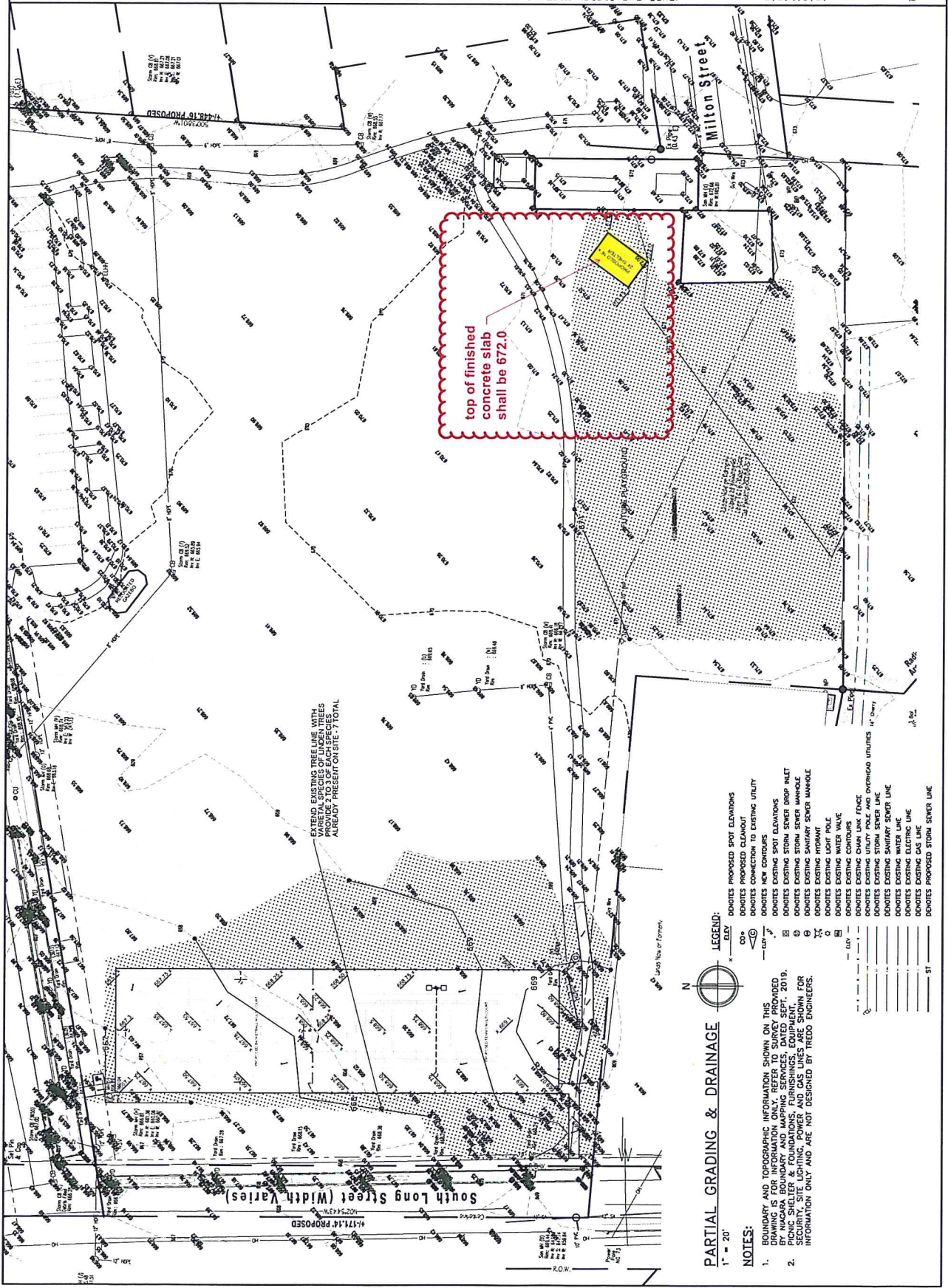
PROJECT NAME  
 SOUTH LONG PARK RENOVATIONS  
 & TENNIS COURT BASKETBALL  
 PARTIAL GRADING & DRAINAGE PLAN

DRAWING NAME  
 WILLIAMSVILLE, NY  
 40 SOUTH LONG ST

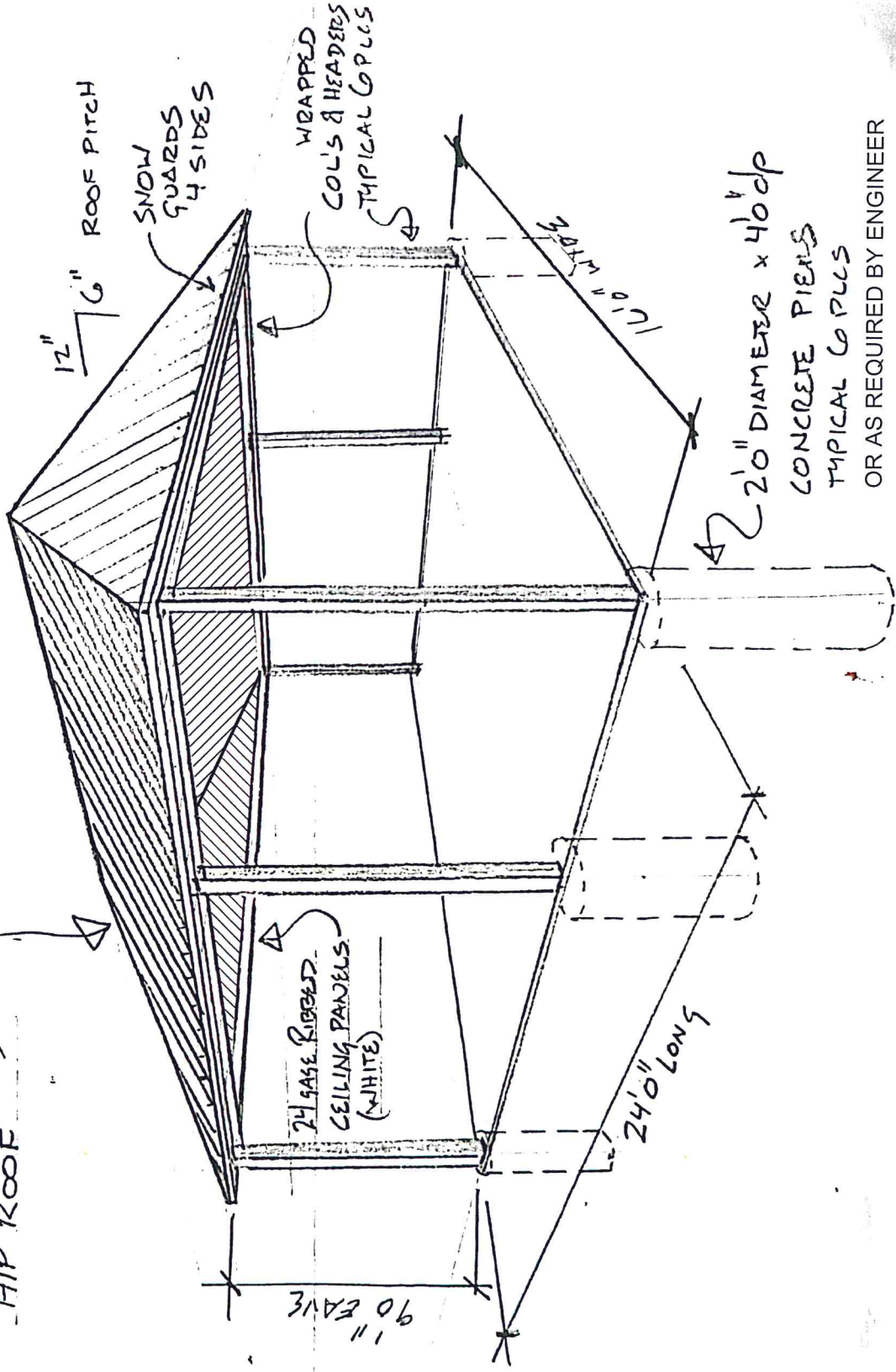
CONTRACT © 2021, TREDU ENGINEERS  
 ALL RIGHTS RESERVED. NO PART OF THIS  
 DRAWING OR ANY INFORMATION CONTAINED  
 HEREIN MAY BE REPRODUCED OR  
 TRANSMITTED IN ANY FORM OR BY ANY  
 MEANS WITHOUT THE WRITTEN PERMISSION  
 OF TREDU ENGINEERS. THE PRODUCTION OF  
 THIS DRAWING FOR USE IN THE  
 PERFORMANCE OF THE DESIGN FOR USE IN  
 THE PRODUCTION OF SUCH ANALYSIS FIELD  
 DETAILS, DRAWINGS & EXHIBITS IS FORWARDED.  
 UNAUTHORIZED ALTERATION AND/OR  
 REVISIONS ARE STRICTLY PROHIBITED.  
 FOR THE PROVISION OF THE NEW YORK STATE  
 PROFESSIONAL SEAL.

PROGRESS DATE 05/27/21  
 DATE 05/27/21  
 JOB NO. N/A  
 CHECKED BY MLE  
 DRAWN BY PHL

DRAWING NO.  
**SP102**



24 GAGE STANDING SEAM  
ROOF OVER  
TRUSSED  
HIP ROOF



SEALED BIDS for the South Long Park Sport Court Relocation, will be received by the Village of Williamsville at the Office of the Village Clerk until 9:00am local time on Thursday March 31, 2022, at which time and place all bids will be publicly opened and read aloud.

South Long Park Sports Court project description:

Provide Paving and equipment installation for a new Basketball and Tennis Court measuring 60-ft wide by 215-ft long including Sports Court Markings and Striping for multiple games. The Tennis Court shall include a 10-ft high, black enamel coated chain link fence (with gates) on 3 sides with the fourth side connecting to a 20-ft wide, 16-ft high cast-in-place concrete handball wall.

A full set of construction documents prepared by Tredo Engineers (dated 5/27/21) shall be the basis the contract.

The successful bidder shall be responsible for:

- Excavation & Backfill for New Handball Wall Foundation
- Form and Cast New Concrete Handball Wall
- Fine Grade Stone subbase for new asphalt paving
- Asphalt Paving - Binder: according to the plans and specs. Roll to a smooth even finish. (assume I5<sup>1</sup> mobilization for Binder)
- Asphalt Paving - Top: according to the plans and specs. Clean and tack the binder prior to paving. Roll to a smooth even finish. (assume 2<sup>nd</sup> mobilization for Top)
- Supplemental Paving for relocated walkway south of Tennis Court
- Sports Court Markings & Surfacing: Stripe & color surface the new courts as shown on plans.
- Fencing around Tennis Court
- Install Sports Equipment including (4) Basketball nets and (1) adjustable Tennis net with light (furnished by Village)
- Coordinate with Village DPW

The Village DPW will be responsible for:

- Site Demolition
- Site Electric
- Site Plumbing (water fountain)
- Site Drainage Improvements/Modifications
- Site Grading within +/- 1" for Sports Court subbase
  - o Line & grade for edge of pavement
- Installation of Water fountain
- Topsoil and Seed

The relocation of the existing Park Shelter and the installation of the proposed Park Shelter are both excluded from this contract.

All workers shall be fully licensed and insured and shall be remunerated based on prevailing wage rates in accordance with Village municipal purchasing standards. Price shall be based on performing work Monday thru Friday during normal working hours (7am to 5pm). Permits are the responsibility of the Village. Should the successful bidder encounter unforeseen underground obstacles, the removal of such obstacles shall be by Village DPW at no expense to the contractor. The Village will make suitable truck access to the building site.

SEALED BIDS for the South Long Park Pavilion Project, 16' wide x 24' long x 9' high post frame open with vaulted hipped roof, will be received by the Village of Williamsville at the Office of the Village Clerk until 9:00am local time on Thursday March 31, 2022, at which time and place all bids will be publicly opened and read aloud.

South Long Park Pavilion project description:

16' wide x 24' long x 9' high (at eave) post frame open pavilion with vaulted hipped roof. Roof framing assumed to be engineered scissor trusses with 6:12 top pitch, 3:12 bottom pitch and 12" eave and gable overhangs on 4 sides (vented soffit in eaves only). The frame shall be clad in painted steel siding and roofing with a minimum 40-year warranty, Village Parks Committee to select colors. All headers shall be wrapped in color matched aluminum. Ceiling shall be color matched aluminum soffit panels. The pavilion shall include a minimum 5" cast-in-place concrete slab on grade.

A sketch of the proposed pavilion and a site plan prepared by Village staff are included for reference.

Successful bidder will work with the Village DPW to coordinate installation of the Pavilion in concert with the Village's Sports Court project which will be run concurrently. It is possible that some or all of the site preparation may be facilitated through the assistance of DPW staff, however for the purposes of this bid solicitation, the Village requests that site clearing, earthwork immediately surrounding the pavilion, and all borrow materials (subbase stone, etc) be included as line item values separate from the base scope described above.

Successful bidder shall also include all engineering (including dimensioned construction documents stamped by a NYSPE) to include treated posts, trusses, purlins, foundations, etc. with sufficient clarity to indicate the location, nature, and extent of the work proposed and show in detail that it will conform to the provisions of the Building Code of New York State and all relevant laws, ordinances, rules and regulations as determined by the Village Building Official.

The project shall be completed prior to November 1<sup>st</sup>.

Our workers shall be fully licensed and insured and shall be remunerated based on prevailing wage rates in accordance with Village municipal purchasing standards. Permits are the responsibility of the Village. Should the successful bidder encounter unforeseen underground obstacles, the removal of such obstacles shall be by Village DPW at no expense to the contractor. The Village will make suitable truck access to the building site.